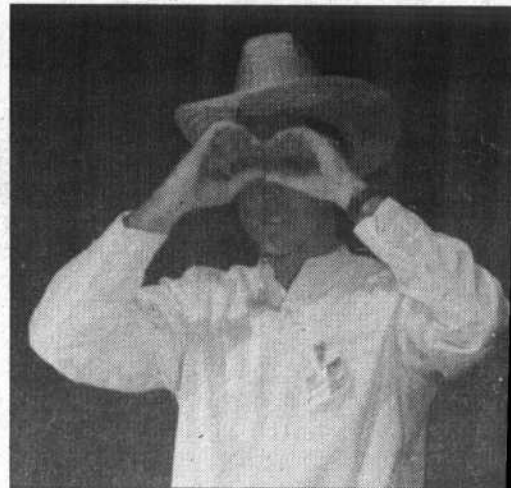
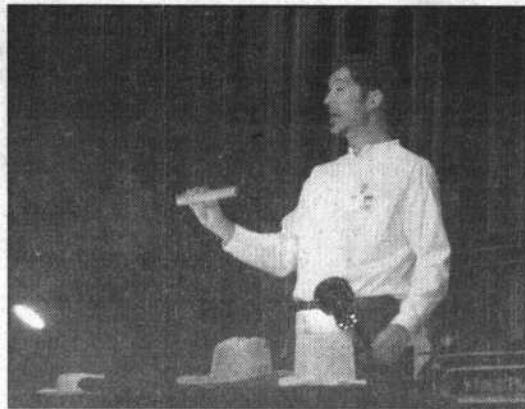
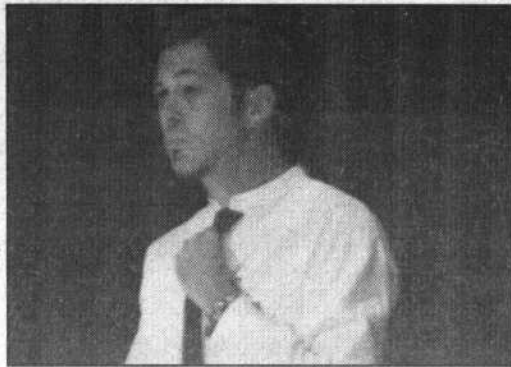


The many faces of Gorge's history

August Mergelman adopts several of his multiple personalities in his original play depicting how the Royal Gorge Bridge was built. "It's about ten percent truth and 90 percent silliness," Mergelman said of his original play. Mergelman, among others, will perform the tale all summer long in the Plaza Theater at the Royal Gorge Bridge. The show will run every day on the hour from 8 a.m. to 5 p.m.



The Canyon Current/Friday, May 24, 2002, p. 21

Tony Sandoval/Canyon Current